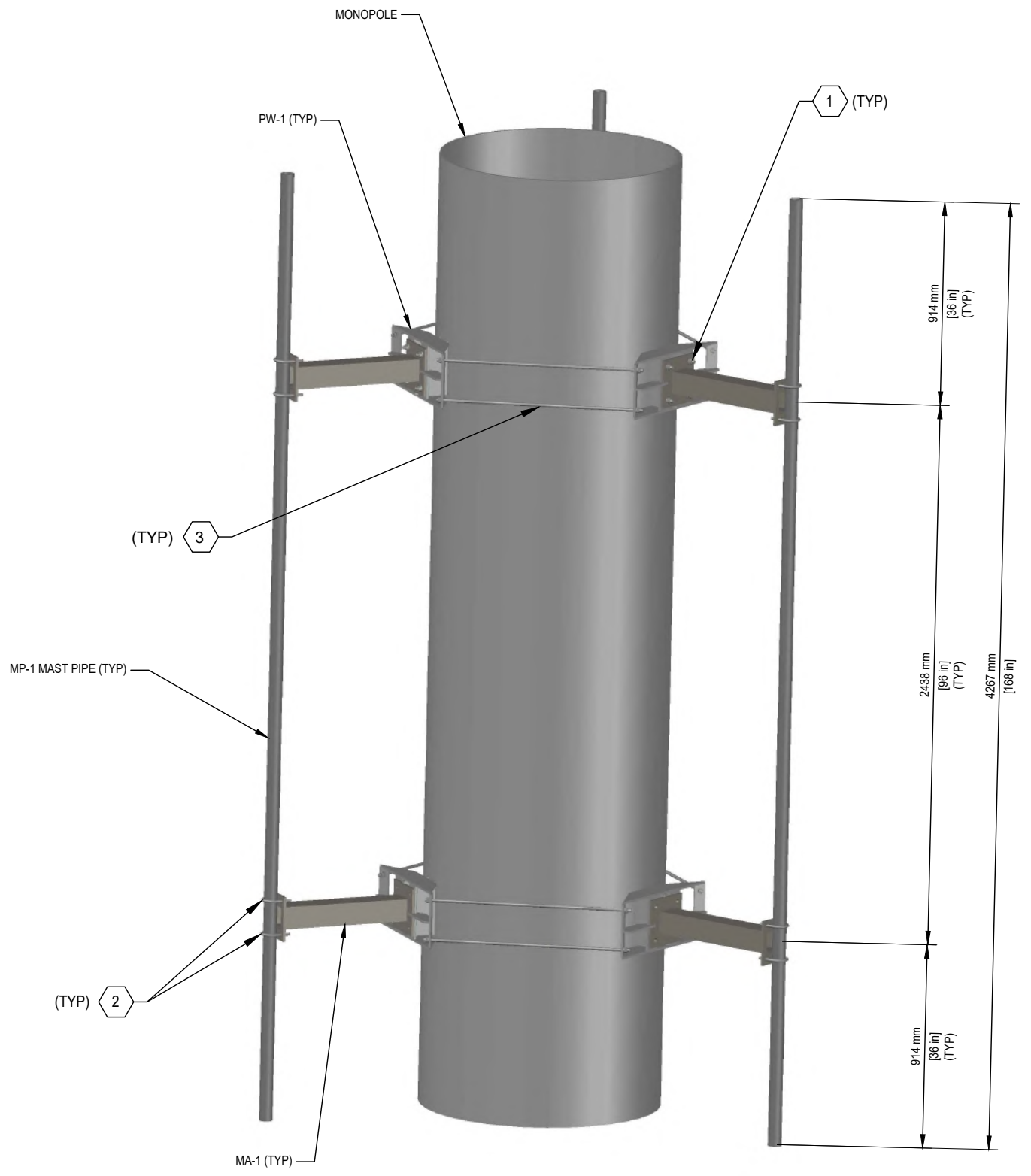


© Copyright 2020, by Paul J. Ford and Company, All Rights Reserved. This document and the data contained herein, is proprietary to Paul J. Ford and Company, issued in strict confidence and shall not, without the prior written permission of Paul J. Ford and Company, be reproduced, copied or used for any purpose other than the intended use for this specific project.

**RFJ PAUL J. FORD & COMPANY**  
 250 E Broad St. Ste 600 Columbus, OH 43215  
 Phone 614.221.6679 www.pauljford.com  
**ARE TELECOM INCORPORATED**  
 1043 GRANDDAVE #213 ST. PAUL, MN 55105  
 PH: (651) 724-1322

FOR MATERIAL LIST  
 SEE SHEET E-3 OR E-4



ANTENNA MOUNT ASSEMBLY ELEVATION 1  
E-1

STANDARD ANTENNA MOUNT  
 TRI OR QUAD MOUNT

PROJECT No: 00020-0279.001.7192  
 DRAWN BY: TAN/RMK  
 DESIGNED BY: KAT  
 CHECKED BY: JGF  
 DATE: 7-17-2020



07/30/2020

TRI MOUNT  
 ELEVATION  
 ASSEMBLY

E-1

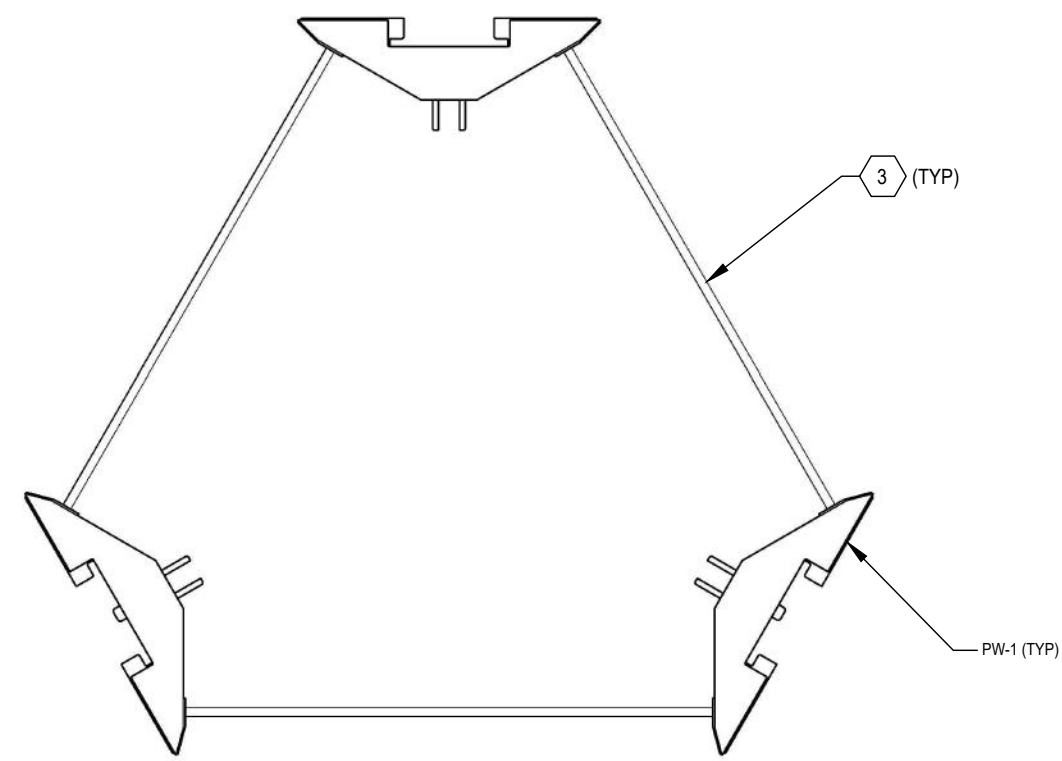
REV	DATE	DESCRIPTION

V1.0 00020-0279.001.DWG

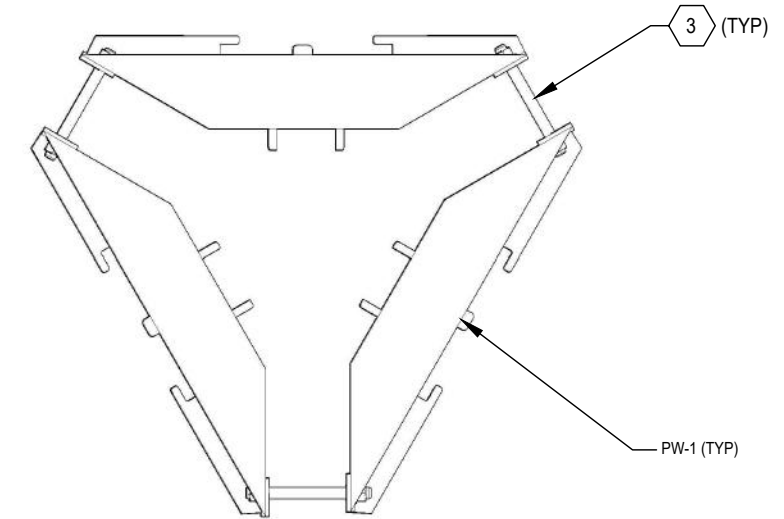
© Copyright 2020, by Paul J. Ford and Company, All Rights Reserved. This document and the data contained herein, is proprietary to Paul J. Ford and Company, issued in strict confidence and shall not, without the prior written permission of Paul J. Ford and Company, be reproduced, copied or used for any purpose other than the intended use for this specific project.

**RJF PAUL J. FORD & COMPANY**  
 250 E Broad St. Ste 600 Columbus, OH 43215  
 Phone 614.221.6679 www.pauljford.com  
**ARE TELECOM INCORPORATED**  
 1043 GRANDDAVE #213 ST. PAUL, MN 55105  
 PH: (651) 724-1322

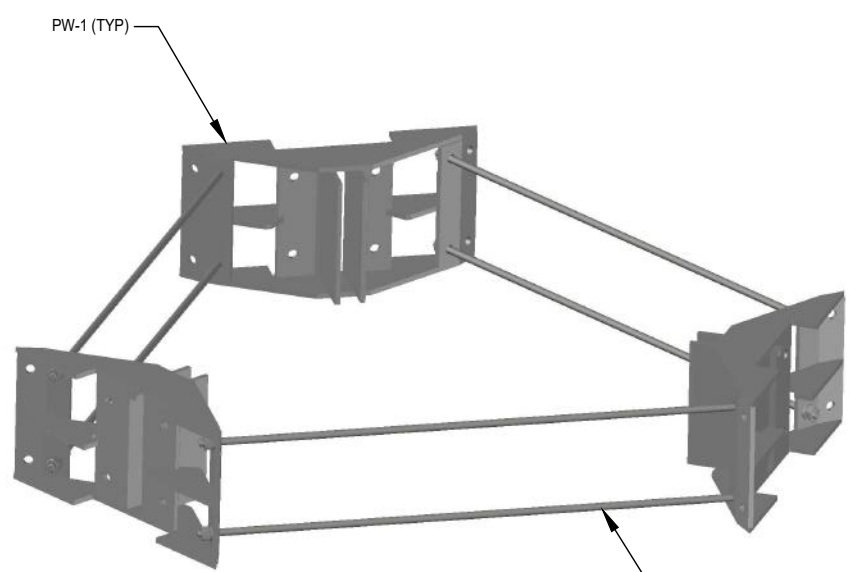
FOR MATERIAL LIST SEE SHEET E-3



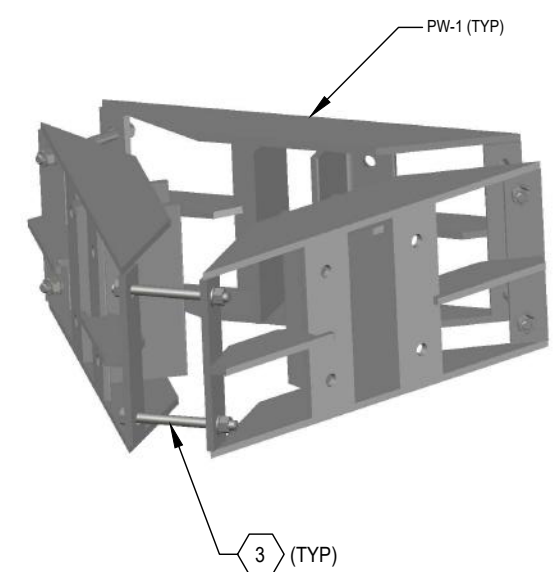
**TRI-MOUNT 1**  
E-2



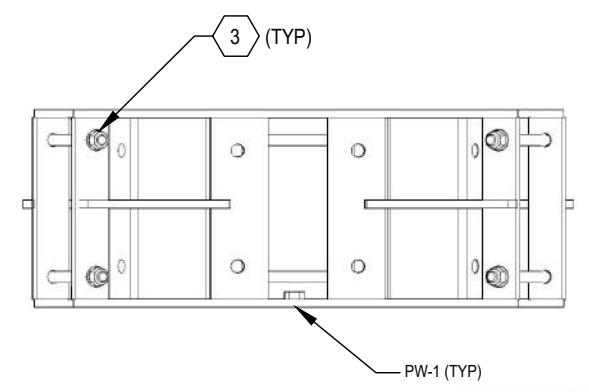
**TRI-MOUNT 2**  
E-2



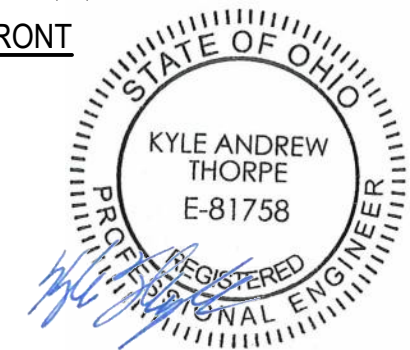
**TRI-MOUNT ISO**  
42" OD POLE



**TRI-MOUNT ISO**  
9" OD POLE



**TRI-MOUNT FRONT**  
9" OD POLE



07/30/2020

**STANDARD ANTENNA MOUNT**  
 TRI OR QUAD MOUNT

PROJECT No: 00020-0279.001.7192  
 DRAWN BY: TAN/RMK  
 DESIGNED BY: KAT  
 CHECKED BY: JGF  
 DATE: 7-17-2020

**TRI MOUNT ARM**

**E-2**

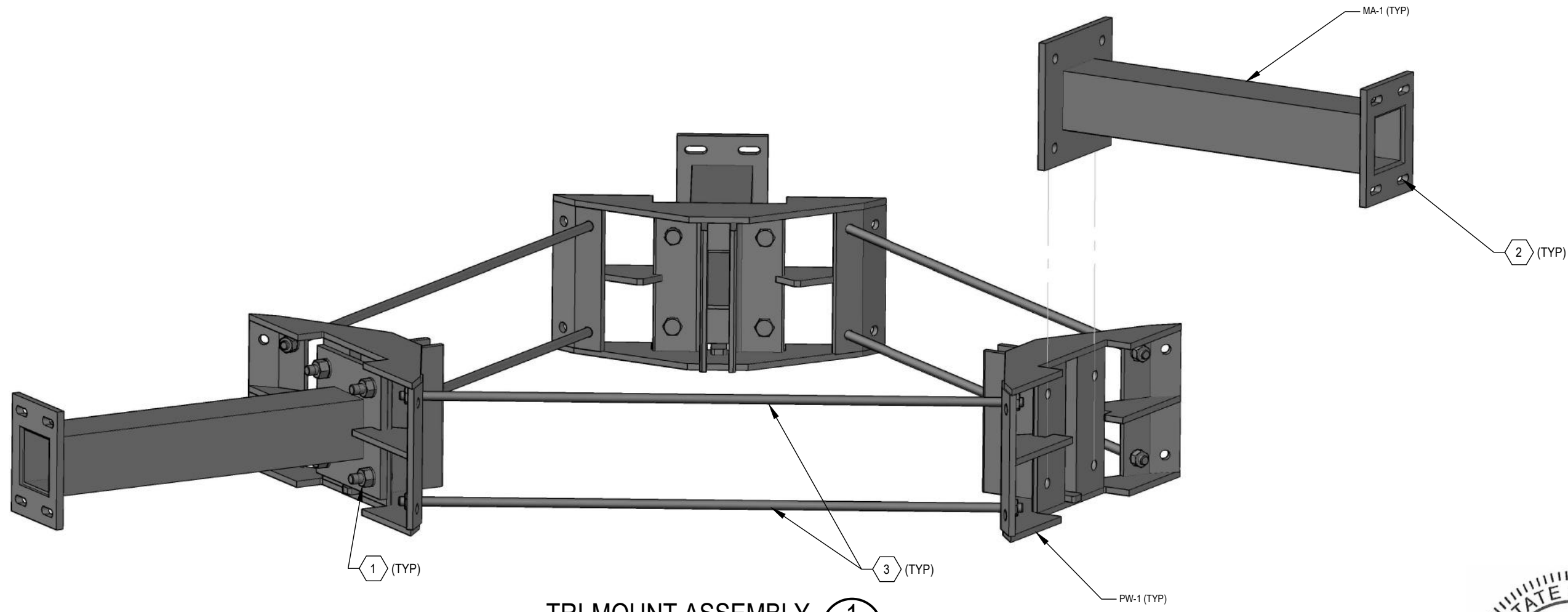
REV	DATE	DESCRIPTION

V1.0 00020-0279.001.DWG

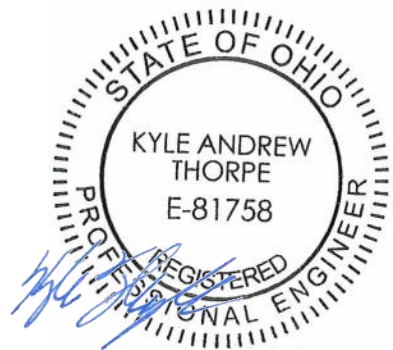
© Copyright 2020, by Paul J. Ford and Company, All Rights Reserved. This document and the data contained herein, is proprietary to Paul J. Ford and Company, issued in strict confidence and shall not, without the prior written permission of Paul J. Ford and Company, be reproduced, copied or used for any purpose other than the intended use for this specific project.

TRI-MOUNT MATERIAL LIST (PER ELEVATION)				
MARK	QTY	MATERIAL	LENGTH	WEIGHT
MA-1	6	MOUNT ARM	305 mm [12.00"]	84 kg [186 LBS]
PW-1	6	PLATE WELDMENT	-	135 kg [298 lbs]
MP-1	3	MAST PIPE 73 mm OD x 5 mm THK [2.875" OD x 0.203" THK]	4267 mm [168"]	111 kg [243 lbs]
1	24	M16 x 2 GR 8.8 w/ (2x) WASHER AND (1x) 2H HEAVY HEX NUT	50 mm [2"]	6 kg [14 lbs]
2	12	12 mm U-BOLTS w/ (2x) NUT & WASHER FOR PIPE SIZE (OD)	53 mm TO 100 mm [2" TO 4"]	-
3	12	M16 x 2 GR 8.8 w/ (2x) FLAT WASHER, SPLIT WASHER AND (1x) 2H HEAVY HEX NUT	* 950 mm [38"]	14 kg [30 lbs]
TOTAL STEEL WEIGHT				350 kg [772 lbs]
TOTAL WEIGHT WITH HARDWARE AND (3% ADDITIONAL FOR) GALVANIZING				361 kg [795 lbs]

\* FOR A 42" OD POLE. LENGTHS VARIES PER MONOPOLE DIAMETER, FIELD CUT EXCESS AS NEEDED FOR FIT UP.



TRI-MOUNT ASSEMBLY 1  
E-3



07/30/2020

REV	DATE	DESCRIPTION

**RJF PAUL J. FORD & COMPANY**  
 250 E Broad St. Ste 600 Columbus, OH 43215  
 Phone 614.221.6679 www.pauljford.com  
**ARE TELECOM INCORPORATED**  
 1043 GRANDDAVE #213 ST. PAUL, MN 55105  
 PH: (651) 724-1322

STANDARD ANTENNA MOUNT  
 TRI OR QUAD MOUNT

PROJECT No:	00020-0279.001.7192
DRAWN BY:	TAN/RMK
DESIGNED BY:	KAT
CHECKED BY:	JGF
DATE:	7-17-2020

TRI MOUNT  
 STAND OFF ARM  
 ASSEMBLY

E-3

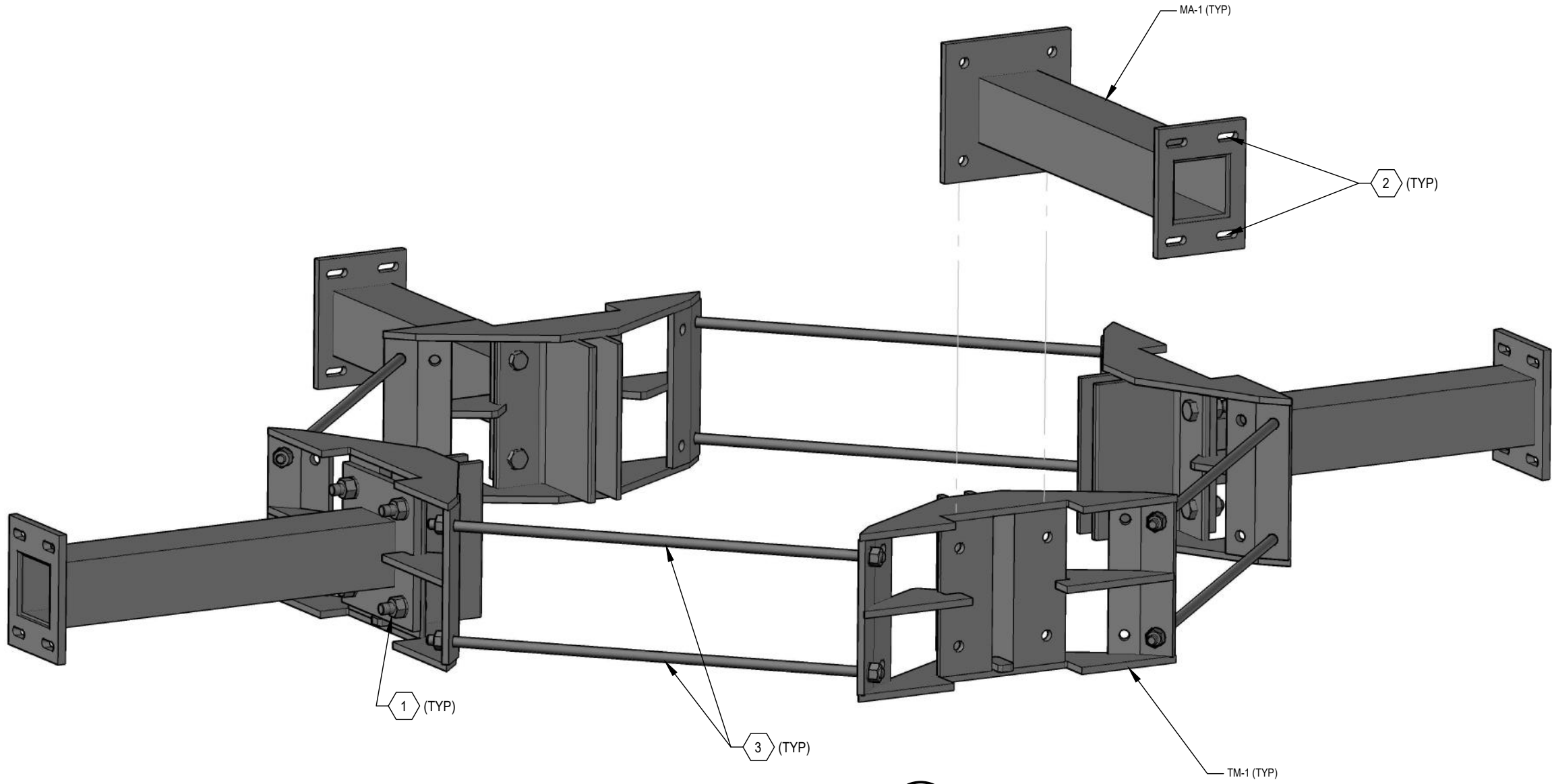
V1.0 00020-0279.001.DWG

© Copyright 2020, by Paul J. Ford and Company, All Rights Reserved. This document and the data contained herein, is proprietary to Paul J. Ford and Company, issued in strict confidence and shall not, without the prior written permission of Paul J. Ford and Company, be reproduced, copied or used for any purpose other than the intended use for this specific project.

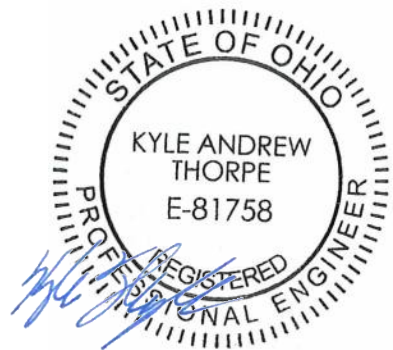
**QUAD-MOUNT MATERIAL LIST (PER ELEVATION)**

MARK	QTY	MATERIAL	LENGTH	WEIGHT
MA-1	8	MOUNT ARM	305 mm [12.00"]	112 kg [247 LBS]
PW-1	8	PLATE WELDMENT	-	180 kg [397 lbs]
MP-1	4	MAST PIPE 60 mm OD x 4 mm THK [2.375" OD x 0.154" THK]	4267 mm [168.00"]	147 kg [324 lbs]
1	32	M16 x 2 GR 8.8 w/ (2x) WASHER AND (1x) 2H HEAVY HEX NUT	50 mm [2"]	8 kg [18 lbs]
2	16	12 mm U-BOLTS w/ (2x) NUT & WASHER FOR PIPE SIZE (OD)	53 mm TO 100 mm [2" TO 4"]	-
3	16	M16 x 2 GR 8.8 w/ (2x) FLAT WASHER, SPLIT WASHER AND (1x) 2H HEAVY HEX NUT	* 950 mm [38"]	18 kg [40 lbs]
TOTAL STEEL WEIGHT				465 kg [1025 lbs]
TOTAL WEIGHT WITH HARDWARE AND (3% ADDITIONAL FOR) GALVANIZING				479 kg [1056 lbs]

\* FOR A 42" OD POLE. LENGTHS VARIES PER MONOPOLE DIAMETER, FIELD CUT EXCESS AS NEEDED FOR FIT UP.



**QUAD-MOUNT ASSEMBLY** 1  
E-4



07/30/2020

REV	DATE	DESCRIPTION

**PAUL J. FORD & COMPANY**  
 250 E Broad St. Ste 600 Columbus, OH 43215  
 Phone 614.221.6679 www.pauljford.com

**ARE TELECOM INCORPORATED**  
 1043 GRAND AVE #213 ST. PAUL, MN 55105  
 PH: (651) 724-1322

STANDARD ANTENNA MOUNT  
 TRI OR QUAD MOUNT

PROJECT No:	00020-0279.001.7192
DRAWN BY:	TAN/RMK
DESIGNED BY:	KAT
CHECKED BY:	JGF
DATE:	7-17-2020

QUAD MOUNT  
 STAND OFF ARM  
 ASSEMBLY

E-4

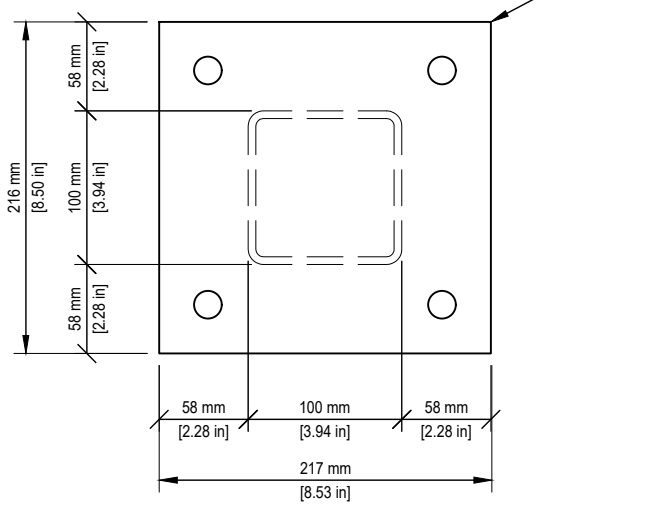
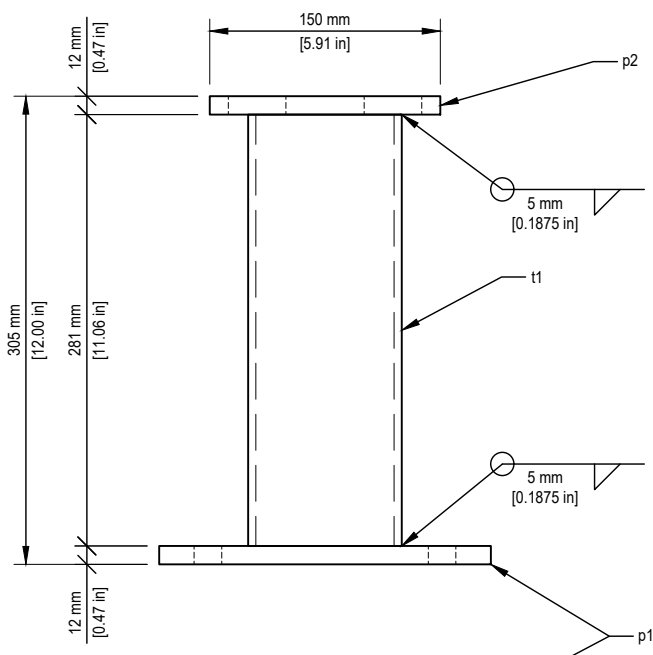
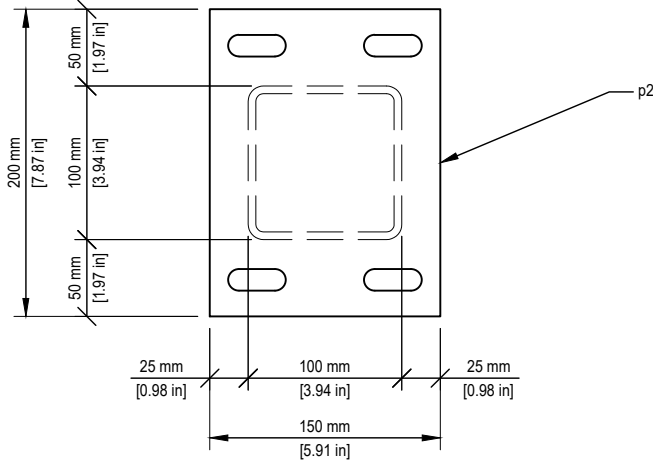
V1.0 00020-0279.001.DWG

© Copyright 2020, by Paul J. Ford and Company, All Rights Reserved. This document and the data contained herein, is proprietary to Paul J. Ford and Company, issued in strict confidence and shall not, without the prior written permission of Paul J. Ford and Company, be reproduced, copied or used for any purpose other than the intended use for this specific project.

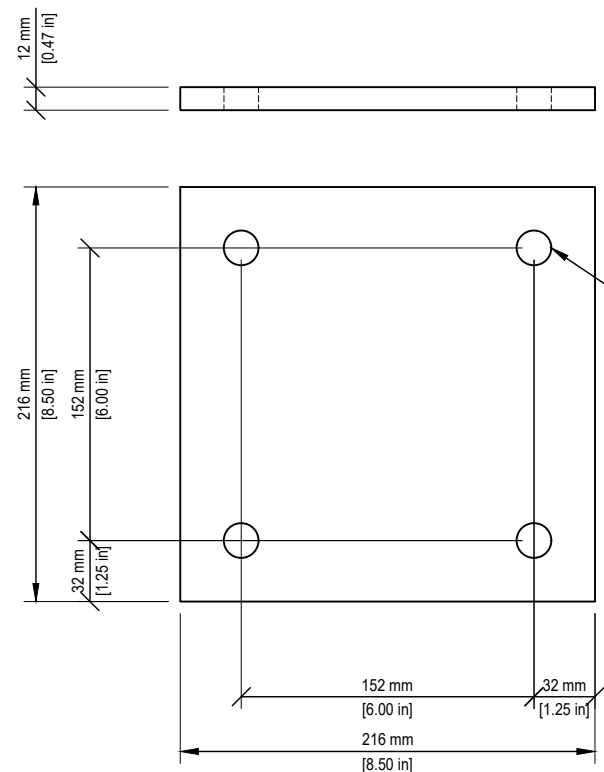
**PAUL J. FORD & COMPANY**  
 250 E Broad St. Ste 600 Columbus, OH 43215  
 Phone 614.221.6679 www.pauljford.com  
**ARE TELECOM INCORPORATED**  
 1043 GRAND AVE #213 ST. PAUL, MN 55105  
 PH: (651) 724-1322

**MATERIAL LIST (PER ARM)**

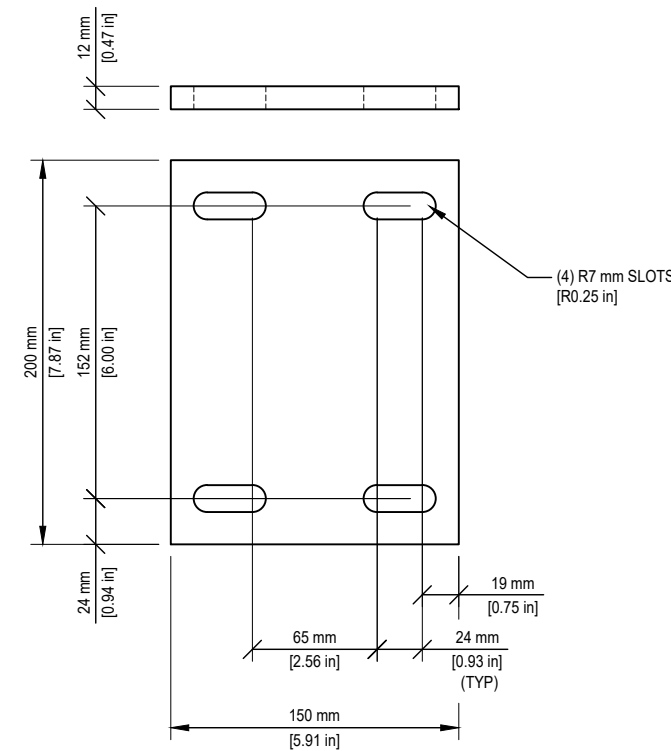
MARK	SUBMARK	ASTM	QTY	MATERIAL	LENGTH	WEIGHT	WEIGHT
	p1	345 MPa (50 ksi)	1	PLATE 12 mm x 216 mm [0.47" x 8.50"]	216 mm [8.50"]	5 kg [10 lbs]	
	p2	345 MPa (50 ksi)	1	PLATE 12 mm x 150 mm [0.47" x 5.91"]	200 mm [7.87"]	3 kg [7 lbs]	
	t1	345 MPa (50 ksi)	1	TUBE 100 mm x 100 mm x 5 mm [4" x 4" x 3/16"]	281 mm [11.06"]	6 kg [13 lbs]	
MA-1			1	MOUNT ARM WELDMENT	305 mm [12.00"]	14 kg [30 lbs]	14 kg [30 lbs]
						TOTAL STEEL WEIGHT	14 kg [30 lbs]
						TOTAL WEIGHT AND (3% ADDITIONAL FOR) GALVANIZING	15 kg [31 lbs]



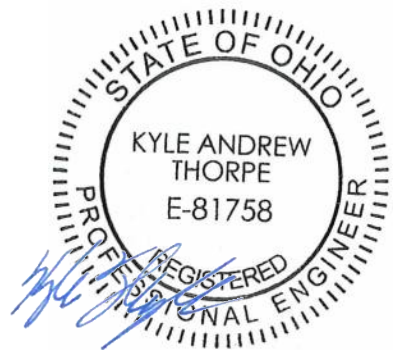
**3 REQ'D MOUNT ARM MARK MA-1**



**3 REQ'D SUBMK-p1**



**3 REQ'D SUBMK-p2**



07/30/2020

REV	DATE	DESCRIPTION

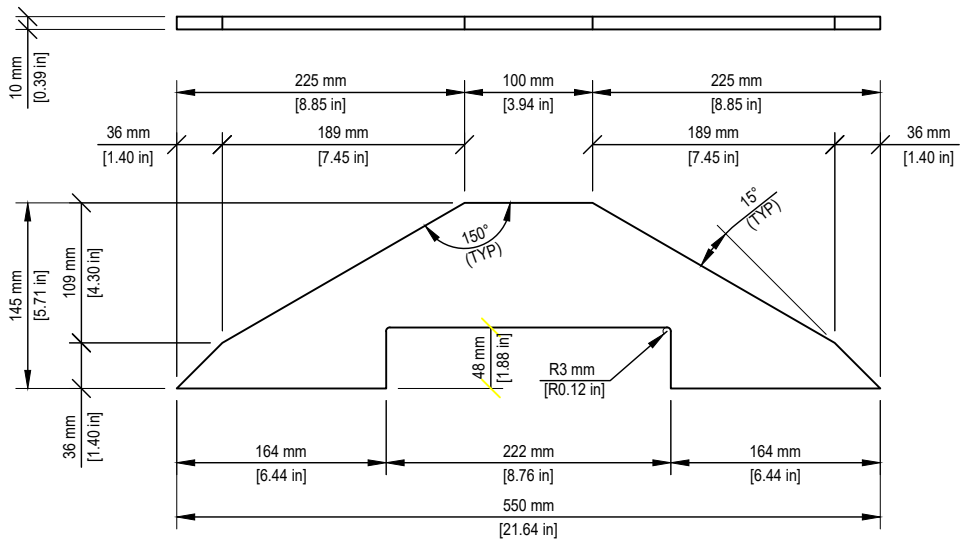
**STANDARD ANTENNA MOUNT**

**TRI OR QUAD MOUNT**

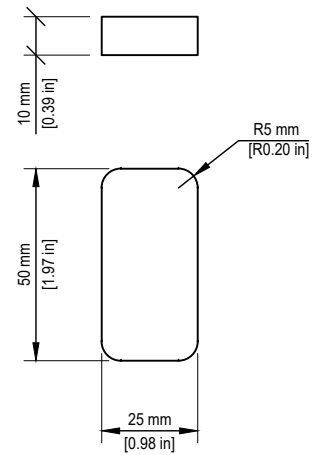
**TRI MOUNT ARM**

**S-1**

V1.0 00020-0279.001.DWG



2 REQ'D SUBMK-p3



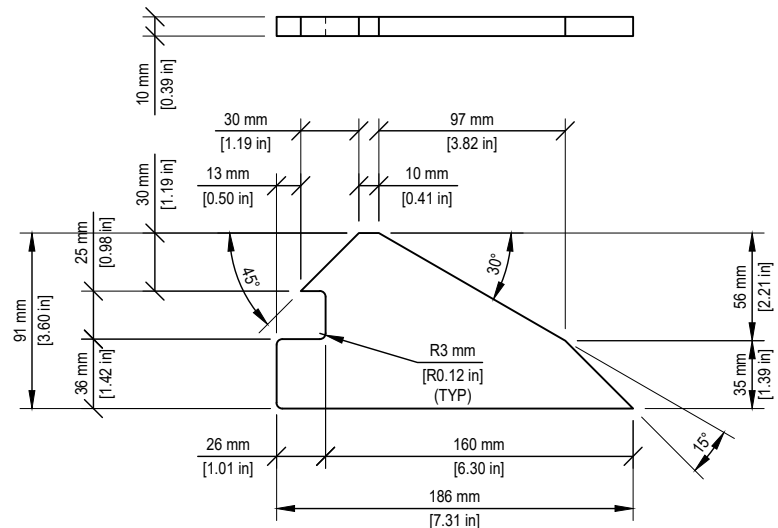
1 REQ'D SUBMK-p4

MATERIAL LIST (PER WELDMENT)							
MARK	SUBMARK	ASTM	QTY	MATERIAL	LENGTH	WEIGHT	WEIGHT
	p3	345 MPa (50 ksi)	2	PLATE 10 mm x 145 mm [0.39" x 5.71"]	550 mm [21.64"]	12 kg [27 lbs]	
	p4	345 MPa (50 ksi)	1	PLATE 10 mm x 25 mm [0.39" x 0.98"]	50 mm [1.97"]	.5 kg [1 lbs]	
	p5	345 MPa (50 ksi)	2	PLATE 10 mm x 91 mm [0.39" x 3.60"]	186 mm [7.31"]	3 kg [6 lbs]	
	p6	345 MPa (50 ksi)	2	PLATE 10 mm x 50 mm [0.39" x 1.97"]	240 mm [9.45"]	2 kg [4 lbs]	
	p7	345 MPa (50 ksi)	2	L152 x 89 x 9.5 [L6 x 3 1/2 x 3/8]	240 mm [9.45"]	5 kg [10 lbs]	
PW-1			1	PLATE WELDMENT		22.5 kg [50 lbs]	22.5 kg [50 lbs]
						TOTAL STEEL WEIGHT	22.5 kg [50 lbs]
						TOTAL WEIGHT AND (3% ADDITIONAL FOR) GALVANIZING	23 kg [51 lbs]

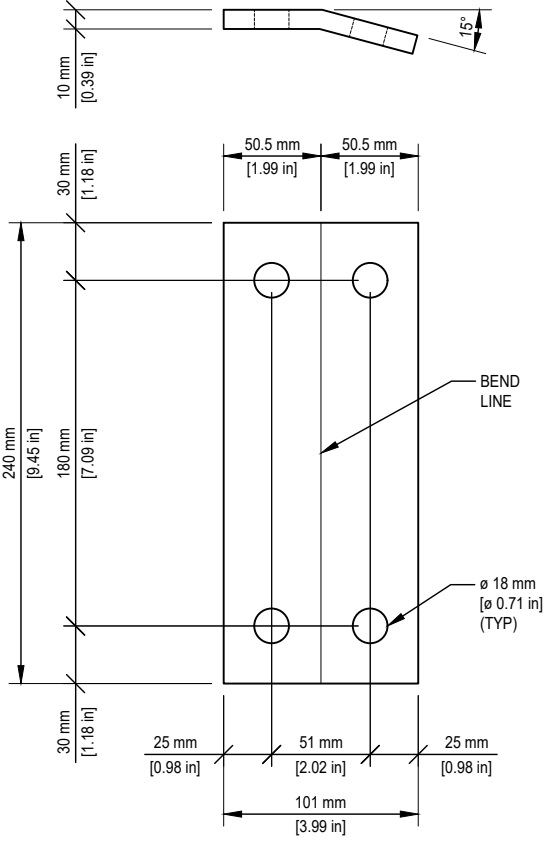
TOTAL STEEL WEIGHT 22.5 kg [50 lbs]  
 TOTAL WEIGHT AND (3% ADDITIONAL FOR) GALVANIZING 23 kg [51 lbs]

© Copyright 2020, by Paul J. Ford and Company, All Rights Reserved. This document and the data contained herein, is proprietary to Paul J. Ford and Company, issued in strict confidence and shall not, without the prior written permission of Paul J. Ford and Company, be reproduced, copied or used for any purpose other than the intended use for this specific project.

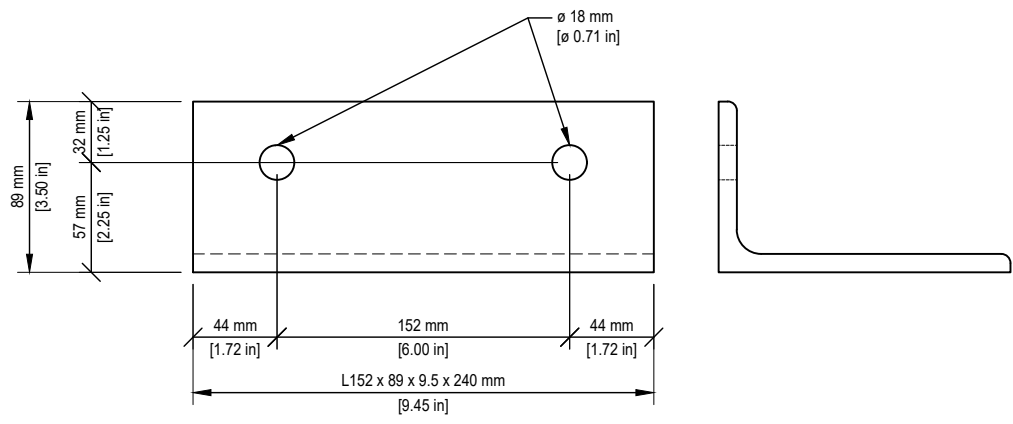
**RJF PAUL J. FORD & COMPANY**  
 250 E Broad St. Ste 600 Columbus, OH 43215  
 Phone 614.221.6679 www.pauljford.com  
**ARE TELECOM INCORPORATED**  
 1043 GRAND AVE #213 ST. PAUL, MN 55105  
 PH: (651) 724-1322



2 REQ'D SUBMK-p5



2 REQ'D SUBMK-p6



2 REQ'D SUBMK-p7



07/30/2020

REV	DATE	DESCRIPTION

STANDARD ANTENNA MOUNT  
 TRI OR QUAD MOUNT

PROJECT No: 00020-0279.001.7192  
 DRAWN BY: TAN/RMK  
 DESIGNED BY: KAT  
 CHECKED BY: JGF  
 DATE: 7-17-2020

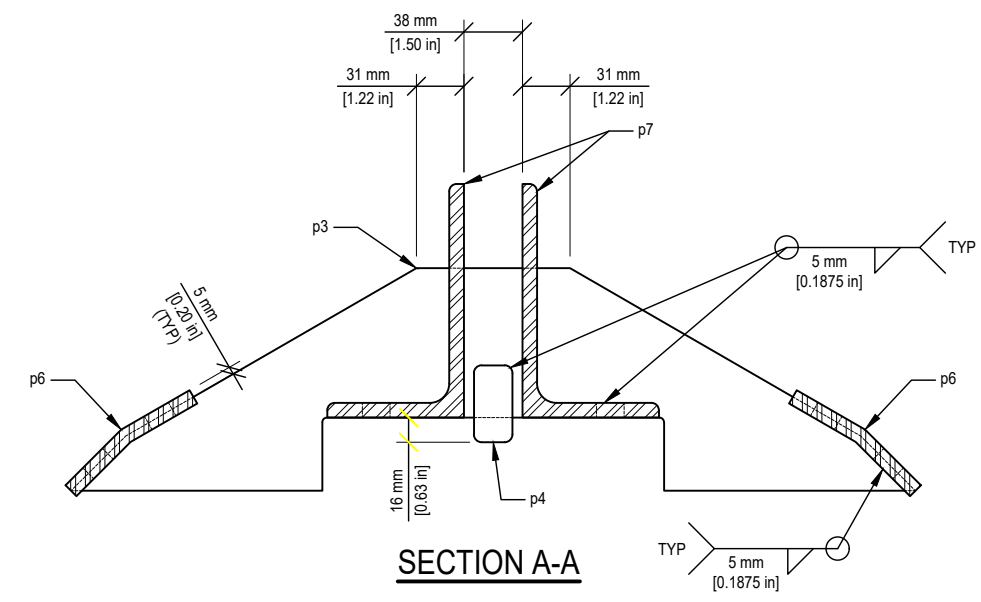
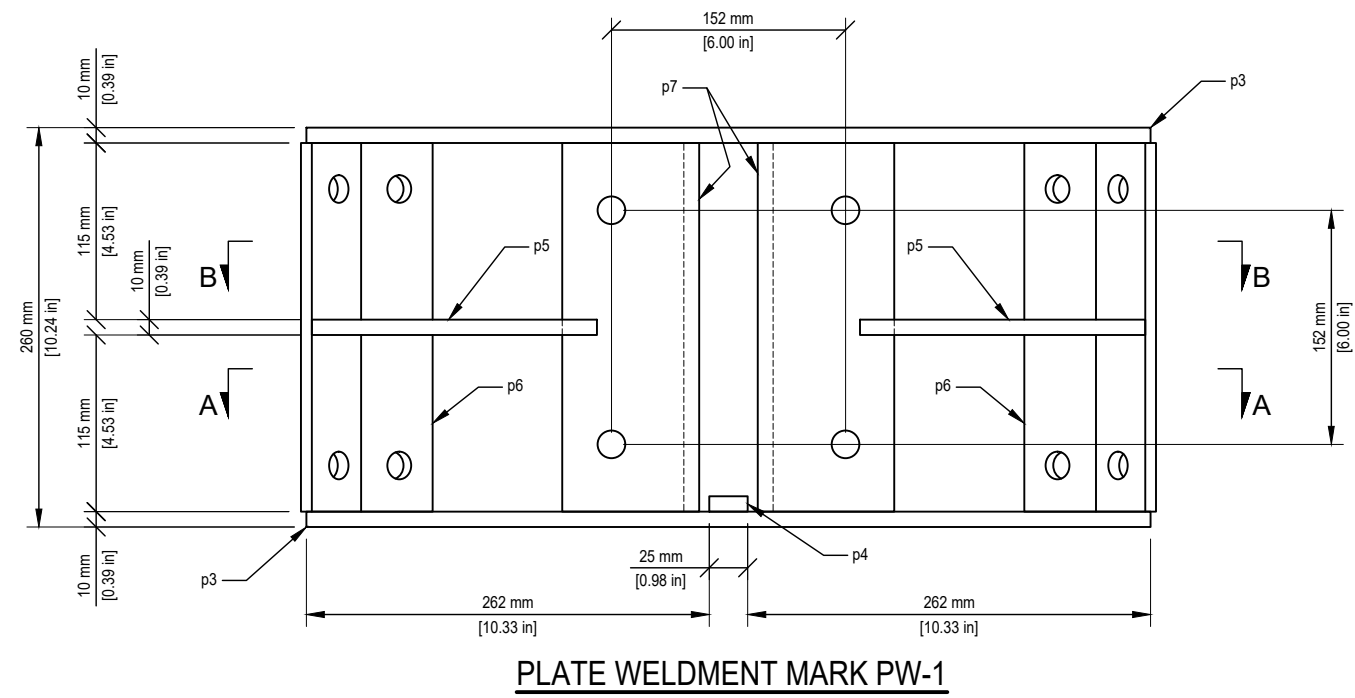
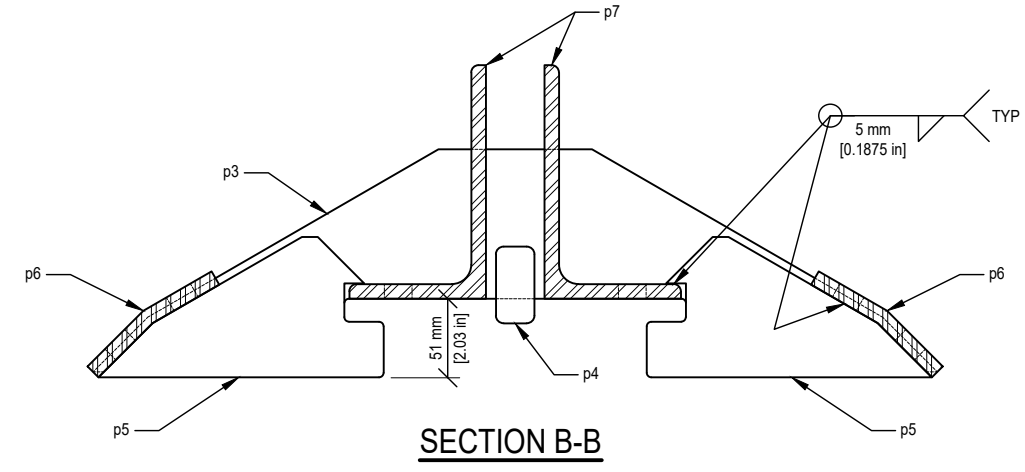
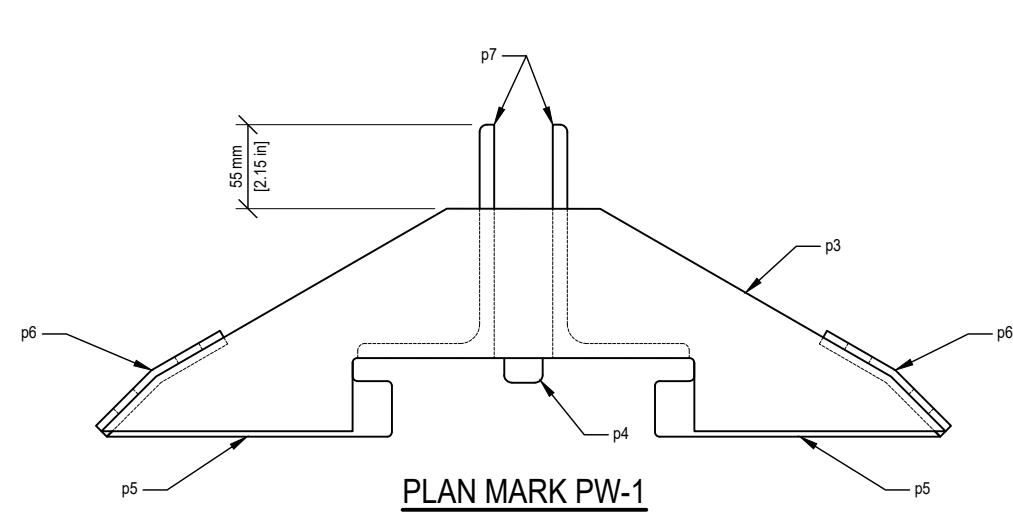
MOUNT PLATE  
 DETAILS

S-2

V1.0 00020-0279.001.DWG

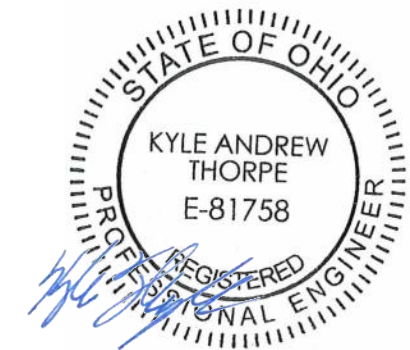
© Copyright 2020, by Paul J. Ford and Company, All Rights Reserved. This document and the data contained herein, is proprietary to Paul J. Ford and Company, issued in strict confidence and shall not, without the prior written permission of Paul J. Ford and Company, be reproduced, copied or used for any purpose other than the intended use for this specific project.

**PAUL J. FORD & COMPANY**  
 250 E Broad St. Ste 600 Columbus, OH 43215  
 Phone 614.221.6679 www.pauljford.com  
**ARE TELECOM INCORPORATED**  
 1043 GRANDDAVE #213 ST. PAUL, MN 55105  
 PH: (651) 724-1322



**STANDARD ANTENNA MOUNT**  
**TRI OR QUAD MOUNT**

PROJECT No:	00020-0279.001.7192
DRAWN BY:	TAN/RMK
DESIGNED BY:	KAT
CHECKED BY:	JGF
DATE:	7-17-2020



07/30/2020

REV	DATE	DESCRIPTION

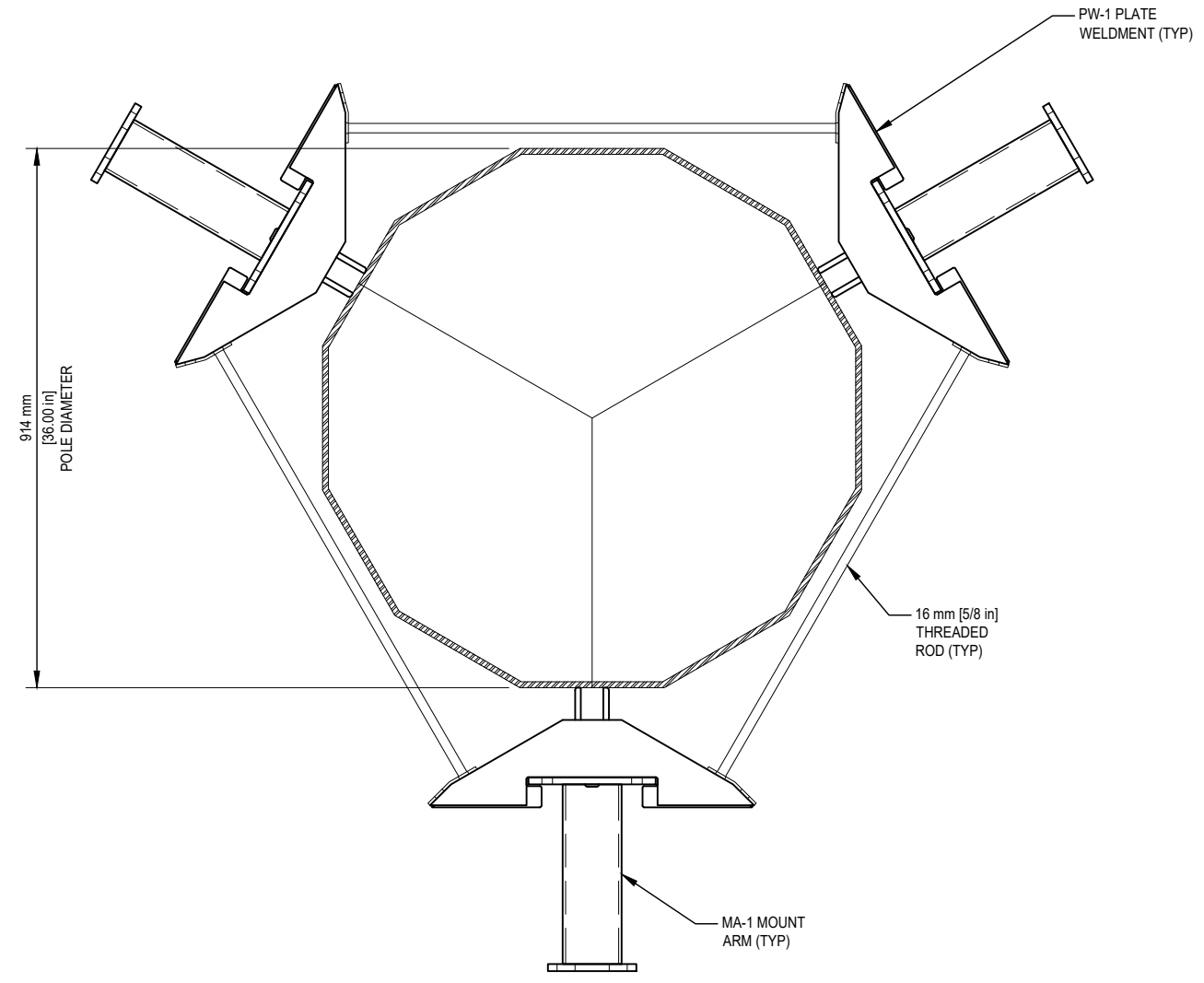
**MOUNT PLATE WELDMENT**

**S-3**

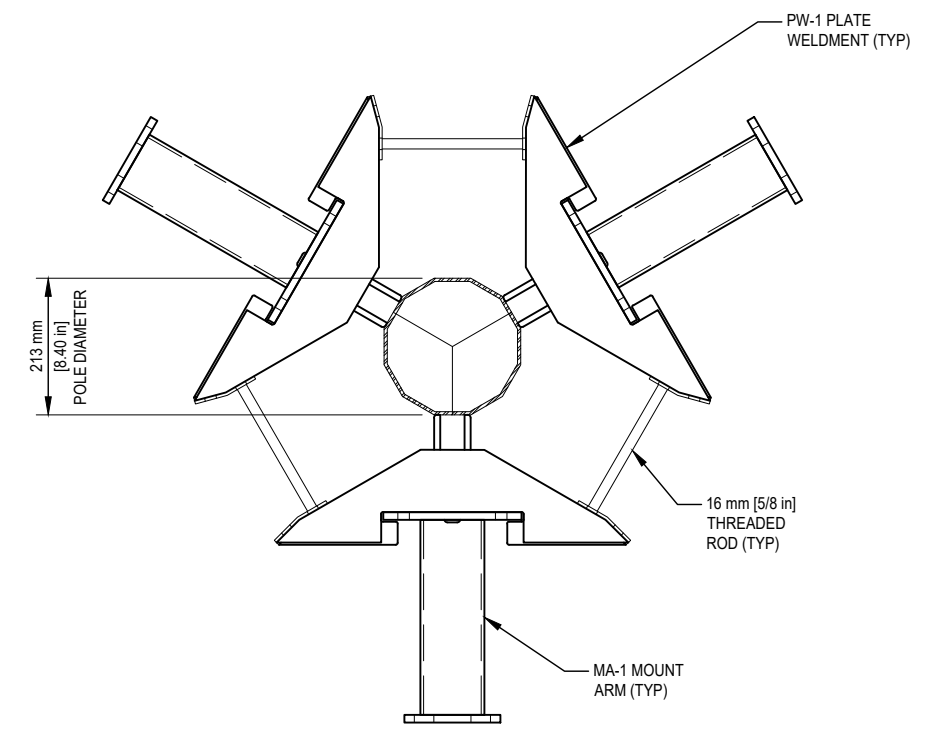
V1.0 00020-0279.001.DWG

© Copyright 2020, by Paul J. Ford and Company, All Rights Reserved. This document and the data contained herein, is proprietary to Paul J. Ford and Company, issued in strict confidence and shall not, without the prior written permission of Paul J. Ford and Company, be reproduced, copied or used for any purpose other than the intended use for this specific project.

**PJF PAUL J. FORD & COMPANY**  
 250 E Broad St. Ste 600 Columbus, OH 43215  
 Phone 614.221.6679 www.pauljford.com  
**ARE TELECOM INCORPORATED**  
 1043 GRAND AVE #213 ST. PAUL, MN 55105  
 PH: (651) 724-1322



**TRI-MOUNT CONFIGURATION**  
 LARGEST POLE DIAMETER



**TRI-MOUNT CONFIGURATION**  
 SMALLEST POLE DIAMETER

**STANDARD ANTENNA MOUNT**  
**TRI OR QUAD MOUNT**

PROJECT No:	00020-0279.001.7192
DRAWN BY:	TAN/RMK
DESIGNED BY:	KAT
CHECKED BY:	JGF
DATE:	7-17-2020



07/30/2020

REV	DATE	DESCRIPTION

**TRI-MOUNT CONFIGURATION**

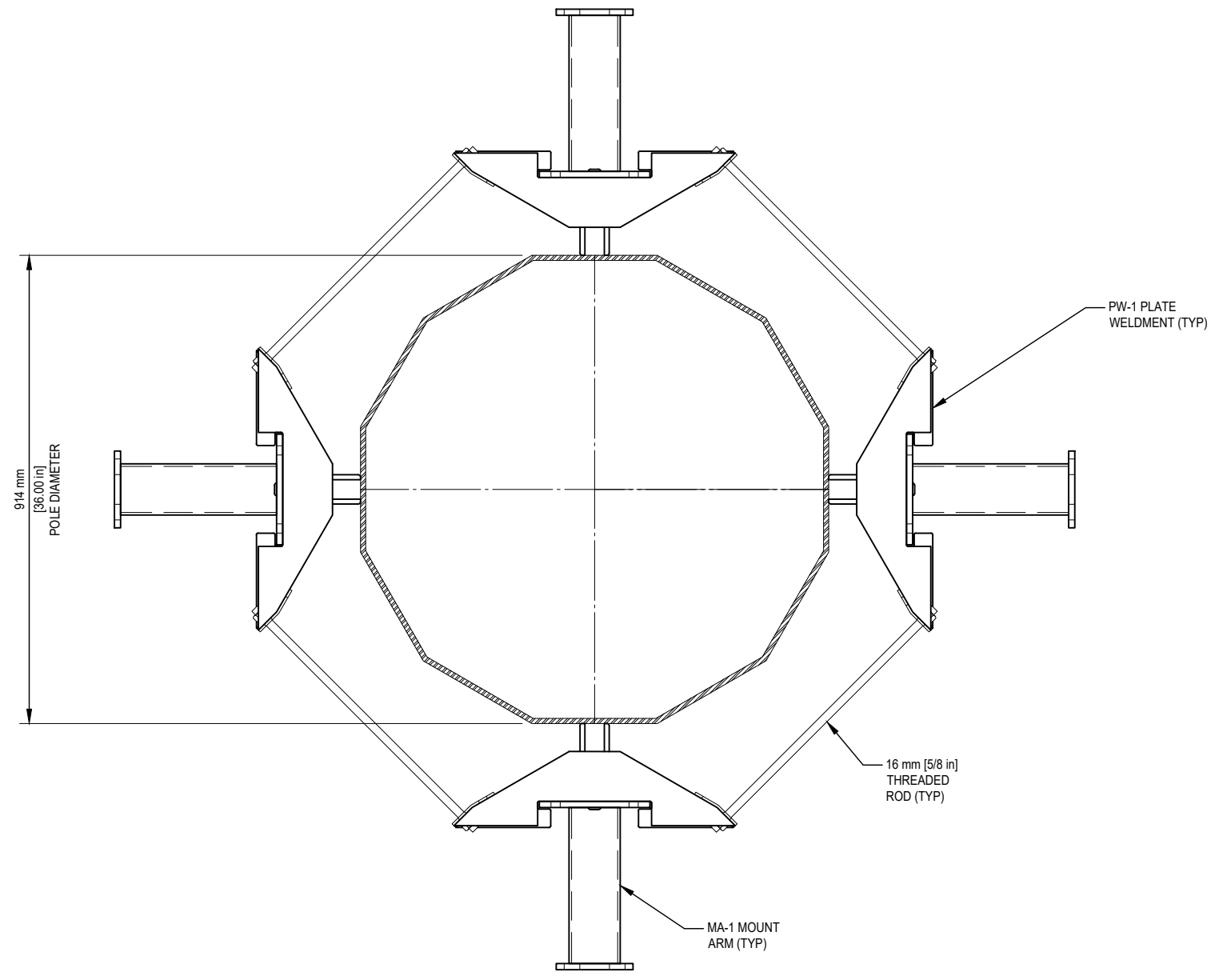
**S-4**

V1.0 00020-0279.001.DWG

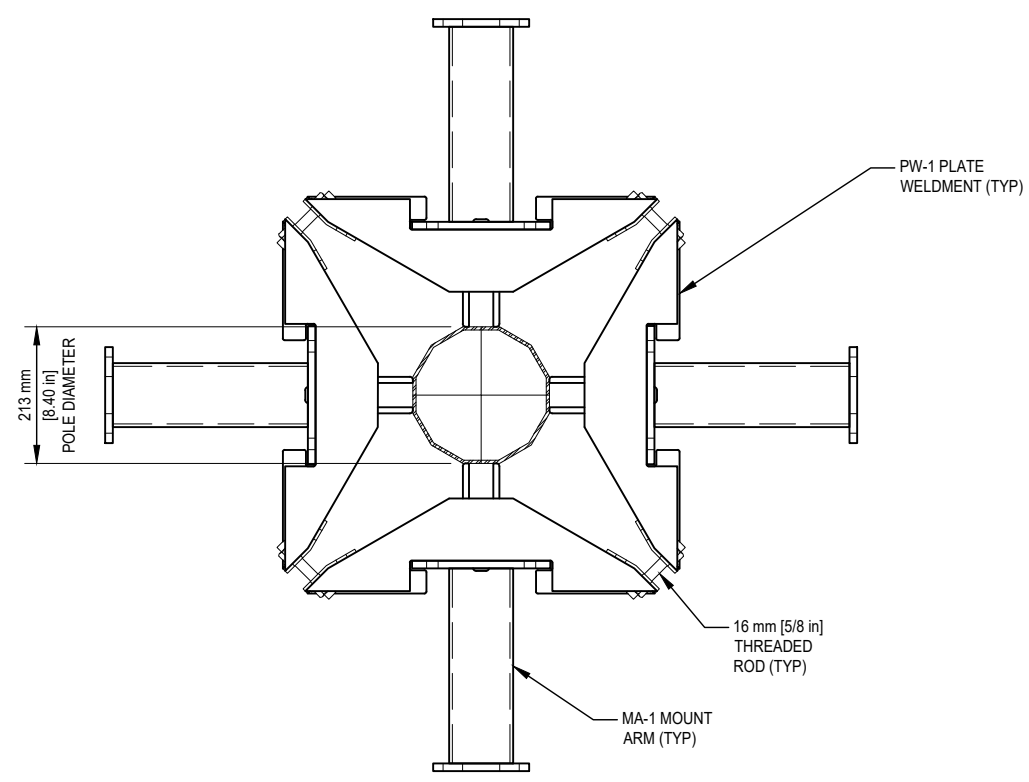


© Copyright 2020, by Paul J. Ford and Company, All Rights Reserved. This document and the data contained herein, is proprietary to Paul J. Ford and Company, issued in strict confidence and shall not, without the prior written permission of Paul J. Ford and Company, be reproduced, copied or used for any purpose other than the intended use for this specific project.

**RJF PAUL J. FORD & COMPANY**  
 250 E Broad St. Ste 600 Columbus, OH 43215  
 Phone 614.221.6679 www.pauljford.com  
**ARE TELECOM INCORPORATED**  
 1043 GRANDDAVE #213 ST. PAUL, MN 55105  
 PH: (651) 724-1322



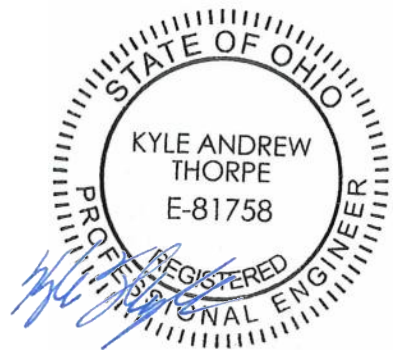
**QUAD-MOUNT CONFIGURATION**  
 LARGEST POLE DIAMETER



**QUAD-MOUNT CONFIGURATION**  
 SMALLEST POLE DIAMETER

**STANDARD ANTENNA MOUNT**  
 TRI OR QUAD MOUNT

PROJECT No:	00020-0279.001.7192
DRAWN BY:	TAN/RMK
DESIGNED BY:	KAT
CHECKED BY:	JGF
DATE:	7-17-2020



07/30/2020

REV	DATE	DESCRIPTION

**QUAD-MOUNT CONFIGURATION**

**S-5**

V1.0 00020-0279.001.DWG