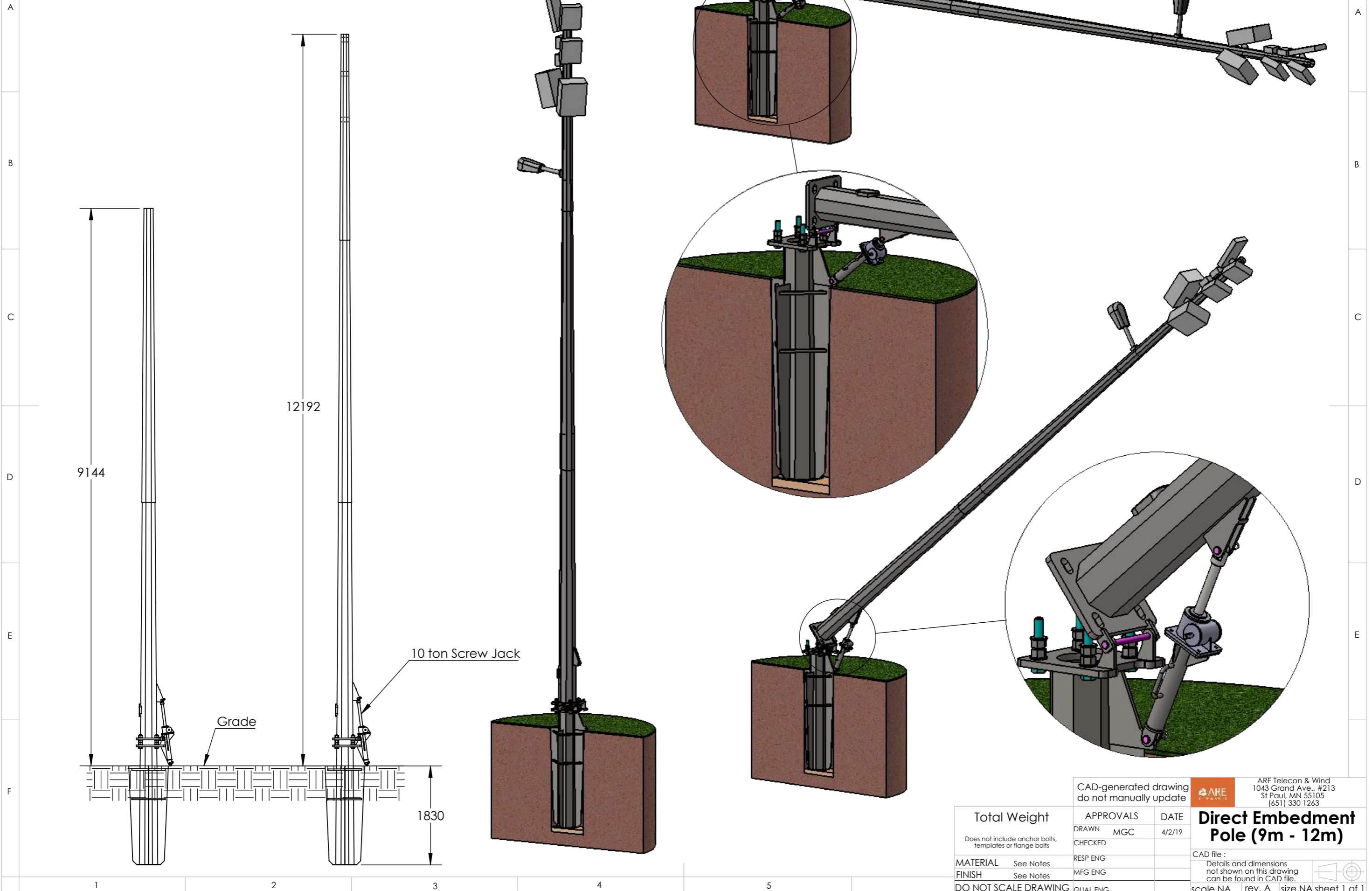


Proprietary rights are included in the information disclosed herein. This information is submitted in confidence and neither the document nor the information disclosed herein shall be reproduced or transferred to other documents for manufacturing or for any other purpose except as specifically authorized in writing by ARE Telecom & Wind.

REVISIONS			
REV.	DESCRIPTION	DATE	APPROVED
A	initial release	4/2/19	MGC



CAD-generated drawing do not manually update		ARE Telecom & Wind 1043 Grand Ave., #213 St Paul, MN 55105 (651) 330 1263	
<b>Total Weight</b>	APPROVALS	DATE	<b>Direct Embedment Pole (9m - 12m)</b> CAD file: Details and dimensions not shown on this drawing can be found in CAD file.
Does not include anchor bolts, templates or flange bolts	DRAWN MGC	4/2/19	
	CHECKED		
MATERIAL See Notes	RESP ENG		
FINISH See Notes	MFG ENG		
DO NOT SCALE DRAWING	QUAL ENG		scale NA rev. A size NA sheet 1 of 1