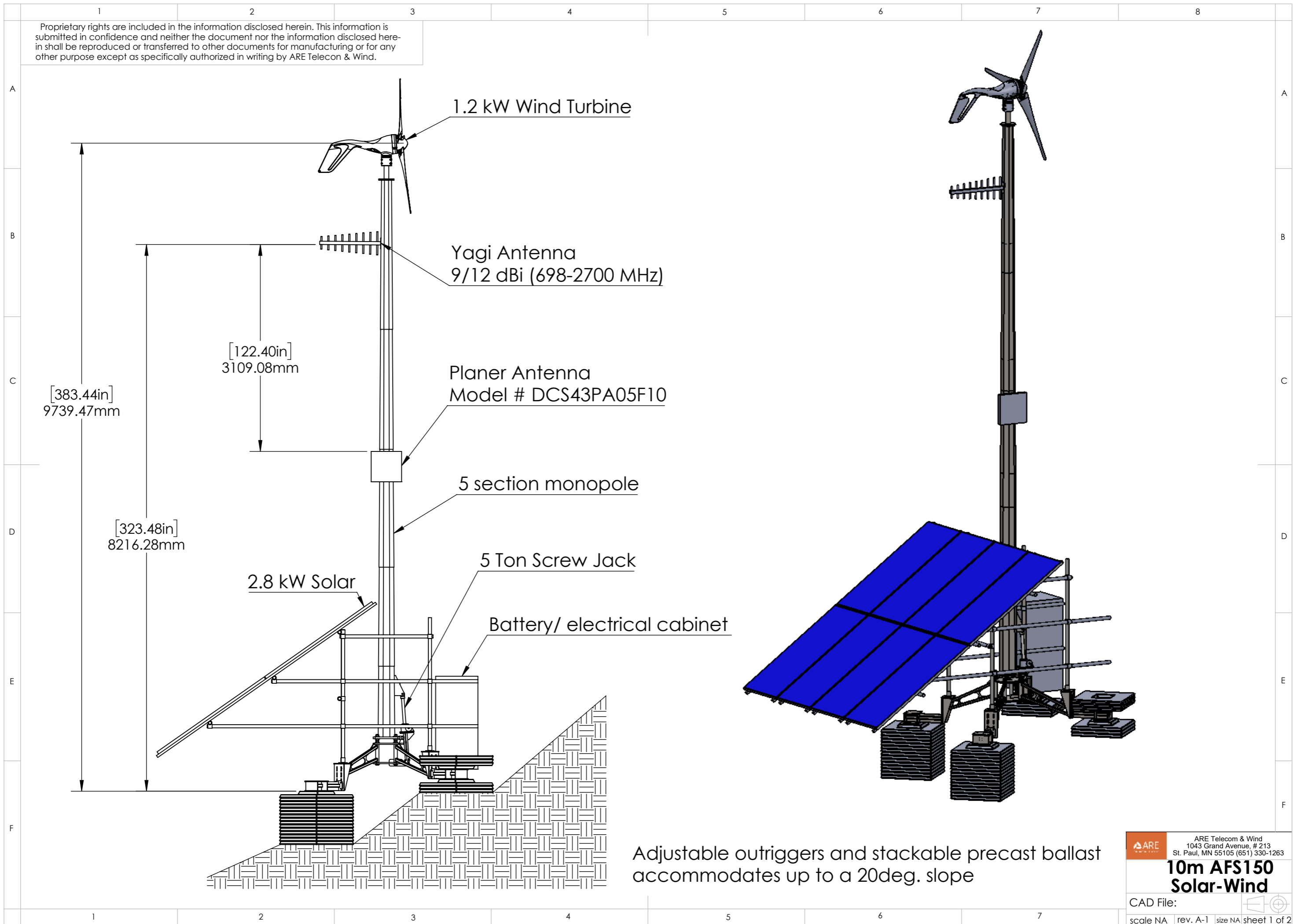




Proprietary rights are included in the information disclosed herein. This information is submitted in confidence and neither the document nor the information disclosed herein shall be reproduced or transferred to other documents for manufacturing or for any other purpose except as specifically authorized in writing by ARE Telecom & Wind.



Adjustable outriggers and stackable precast ballast accommodates up to a 20deg. slope

 ARE Telecom & Wind
 1043 Grand Avenue, # 213
 St. Paul, MN 55105 (651) 330-1263
10m AFS150 Solar-Wind
 CAD File: 
 scale NA rev. A-1 size NA sheet 1 of 2

Proprietary rights are included in the information disclosed herein. This information is submitted in confidence and neither the document nor the information disclosed herein shall be reproduced or transferred to other documents for manufacturing or for any other purpose except as specifically authorized in writing by ARE Telecom & Wind.

