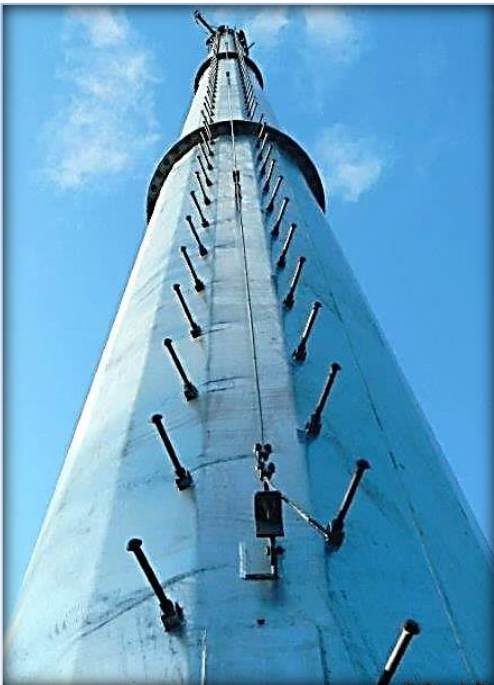


AFS 1900 Ballast Foundation and 100' Flanged Pole Lewis County, NY



CHALLENGES

- Customized 100' pole that could support additional pole sections
- Significant logistics planning due to college campus' restrictions
- Installation was in small space and small footprint of foundation required

OVERVIEW

ARE Telecom was contracted by Crown Castle to design and install our AFS 1900 ballasted foundation system with a 100' flanged monopole to support a communication antennas. Customer asked to design system to accommodate future pole sections and antennas. Installation was remote, had a small footprint and work space was tight.

SOLUTION

ARE designed and manufactured a customized monopole for Crown Castle to be installed on AFS 1900 foundation that is now 100', but can support additional pole sections up to 140'. Permanent or temporary, the AFS 1900 can be disassembled, and returned to ARE's warehouse for its next deployment.

Project benchmarks:

- Crew flexibility and equipment availability allowing for installation under challenging time constraints
- Mobilize all equipment, tools and ballast
- Level base to set foundation
- Install hydraulic system and 80' self-raising monopole to support 1 antenna.

Project Resources

4 Man Crew, 12 Hours, 1 Skid Steer, 1 Telehandler, 1 Crane



Leveling installation site



King post moved to installation site



Preassembly of the base



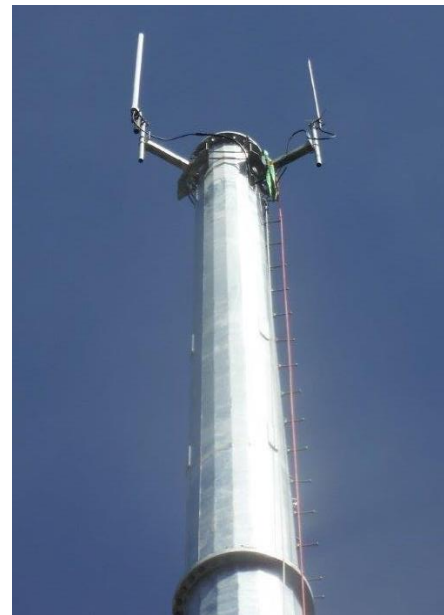
AFS with sidewalls filled with ballast



Foundation with ballast



Pole installation



AFS 1900 foundation & 100' flanged pole installed