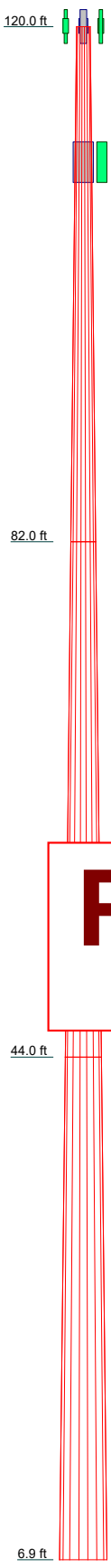


Section	1	2	3	7.8
Length (ft)	38.00	38.00	37.10	
Number of Sides	18	18	18	
Thickness (in)	0.1875	0.2500	0.2500	
Top Dia (in)	11.8110	22.2060	32.6010	
Bot Dia (in)	22.2060	32.6010	42.7500	
Grade		A572-65		
Weight (K)	1.3	2.8	3.7	



DESIGNED APPURTENANCE LOADING

TYPE	ELEVATION	TYPE	ELEVATION
Baicells AW53159	120	(3) 6' x 3.5"OD mount pipe w/ Chain Mount	120
Baicells AW53159	120		
Baicells AW53159	120	Air Fiber AF5	110
Baicells Nova 1W	120	Air Fiber AF5	110
Baicells Nova 1W	120	(2) 6' x 3.5"OD mount pipe w/ Chain Mount	110
Baicells Nova 1W	120		

MATERIAL STRENGTH

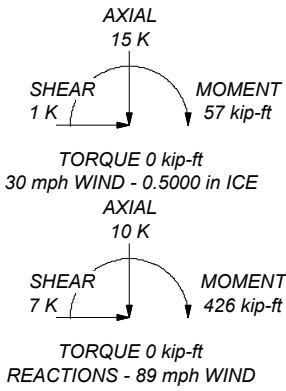
GRADE	Fy	Fu	GRADE	Fy	Fu
A572-65	65 ksi	80 ksi			

TOWER DESIGN NOTES

1. Tower is located in Letcher County, Kentucky.
2. Tower designed for Exposure C to the TIA-222-G Standard.
3. Tower designed for a 89 mph basic wind in accordance with the TIA-222-G Standard.
4. Tower is also designed for a 30 mph basic wind with 0.50 in ice. Ice is considered to increase in thickness with height.
5. Deflections are based upon a 60 mph wind.
6. Tower Structure Class II.
7. Topographic Category 1 with Crest Height of 0.00 ft
8. TOWER RATING: 24%

Preliminary
05/04/2018 1:39:46 PM

ALL REACTIONS
ARE FACTORED



The AFS-1500 will have sufficient capacity to support the design base reactions. An ultimate bearing capacity of 4000 psf was used in the analysis.

<p>ARE Telecom, Inc. 1043 Grand Ave #213 St Paul, MN 55105 (651) 3309-1263</p>	Job: 120-Ft Pole: Broadband		
	Project: A00017-0201.002.7000		
	Client:	Drawn by:	App'd:
	Code: TIA-222-G	Date: 05/04/18	Scale: NTS
	Path:	Dwg No: E-1	